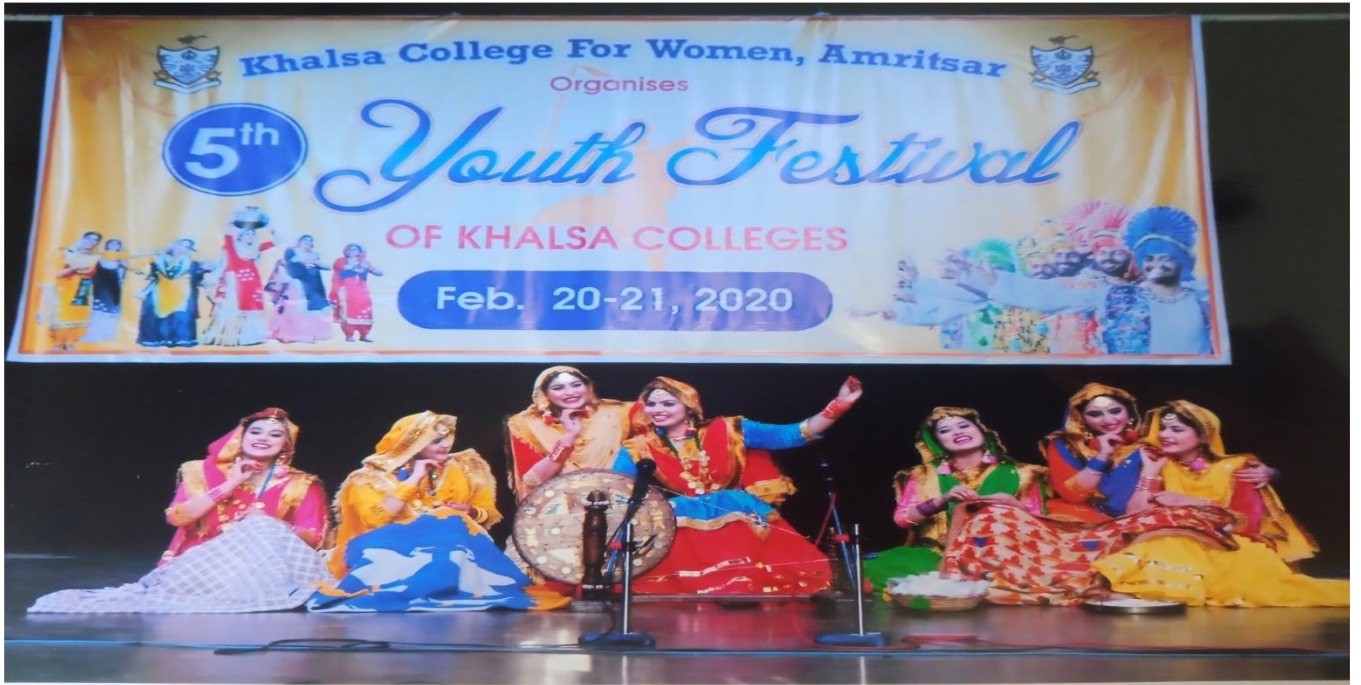


**KHALSA COLLEGE OF EDUCATION, RANJIT AVENUE,
AMRITSAR**



CELEBRATION OF YOUTH FESTIVAL



SOCIAL ACTIVITIES IN COLLEGE

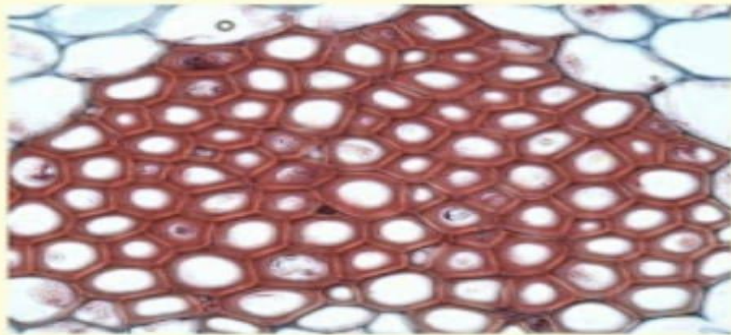


Tissue



December 02, 2020

Tissue (biology)

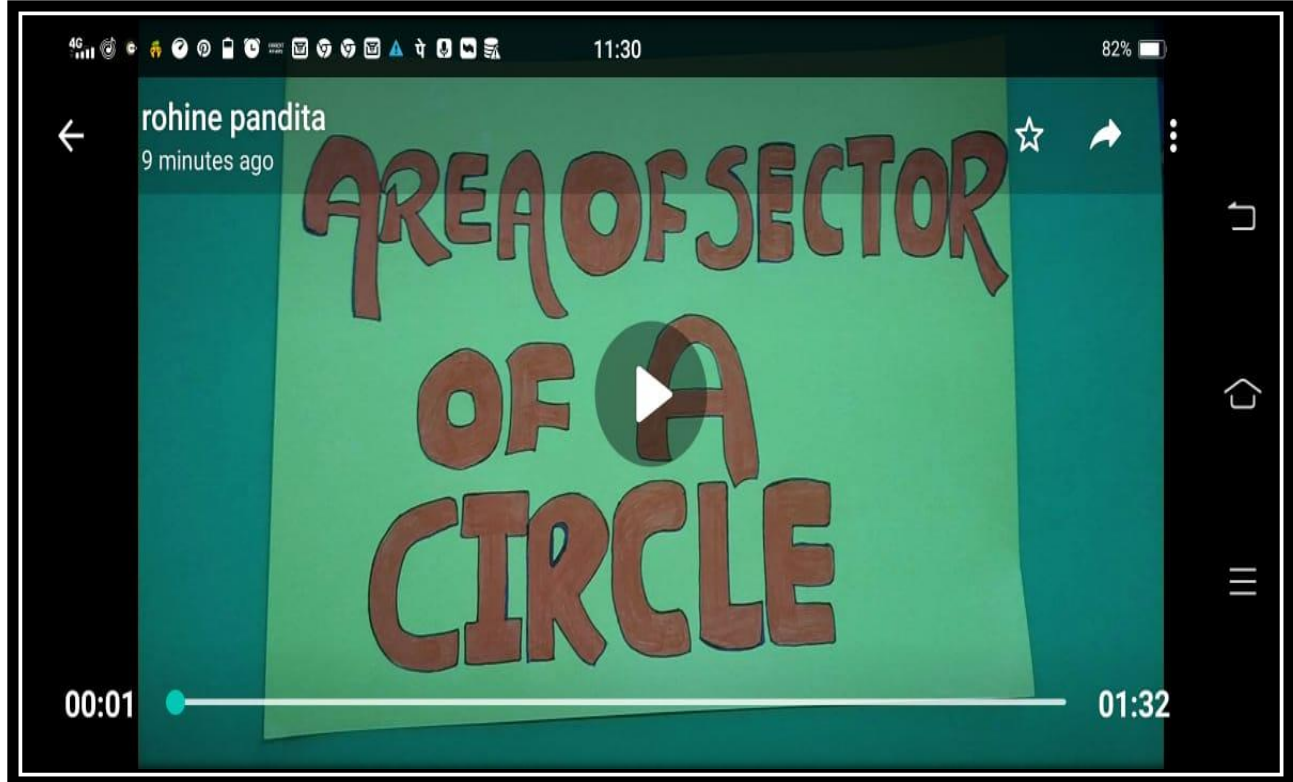


Introduction : A tissue is a group of cells in close proximity organized to perform one or more specific functions.

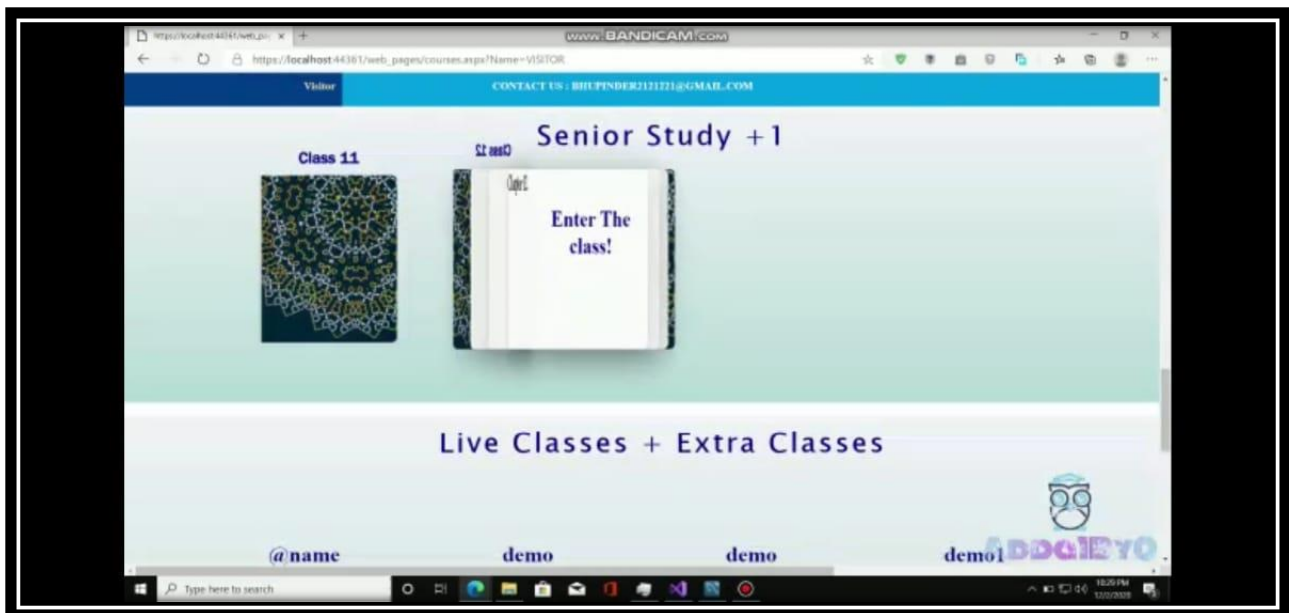
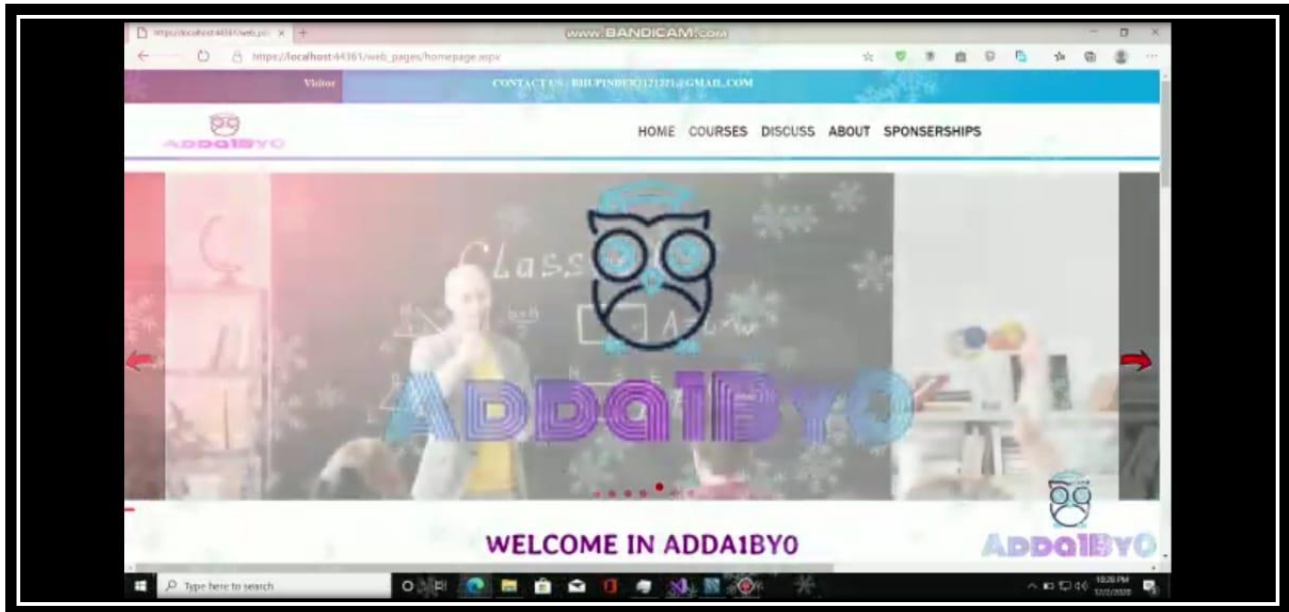
Types: tissue has four types :

.Epithelial tissue: tissue spread throughout body. it covered all body,surface and line body, cavity and its function are protective,absorption,

E-BLOG



USAGE OF ICT BY STUDENTS



CREATION OF WEBSITE BY STUDENTS